

## Supermicro BMC イベントログ取得方法

-WEBGUI から取得する場合：

以下は Microsoft Edge の操作例です。

- ① ブラウザに BMC IP を入力し WebGUI にアクセスする
- ② セキュリティアラートが表示されますが、ここでは[詳細設定]をクリックする



- ③ [BMC\_IP に進む(安全ではありません)]をクリックする



④ ユーザー名とパスワードを入力してログイン

※デフォルトユーザー名とパスワード

ユーザー名：ADMIN

パスワード：ADMIN

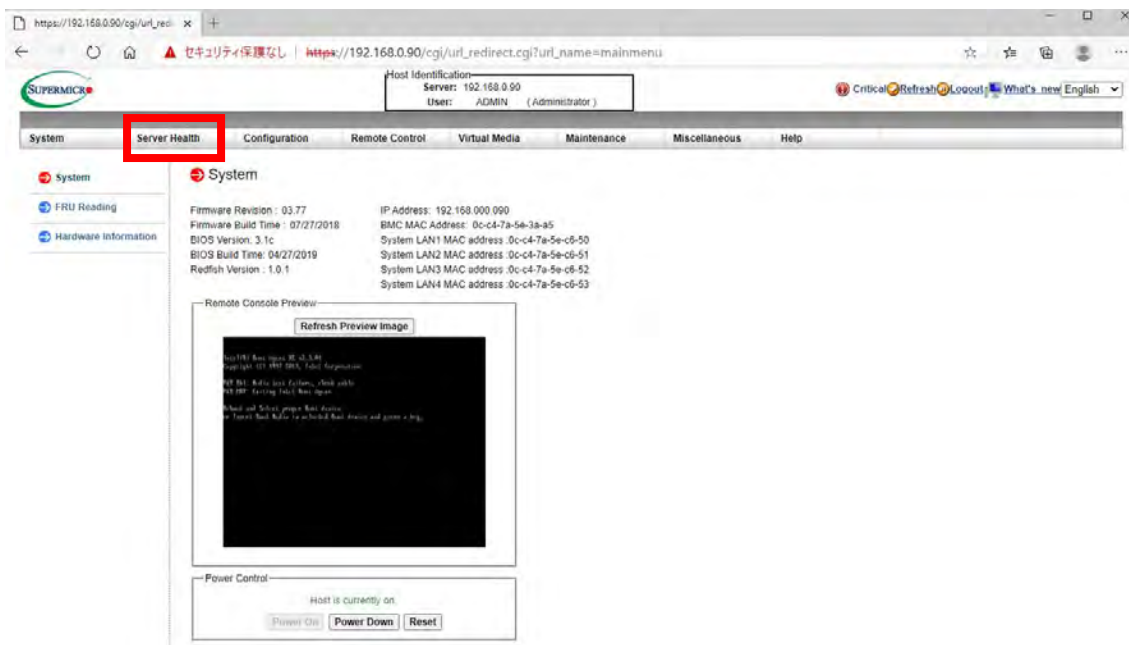


**Please Login**

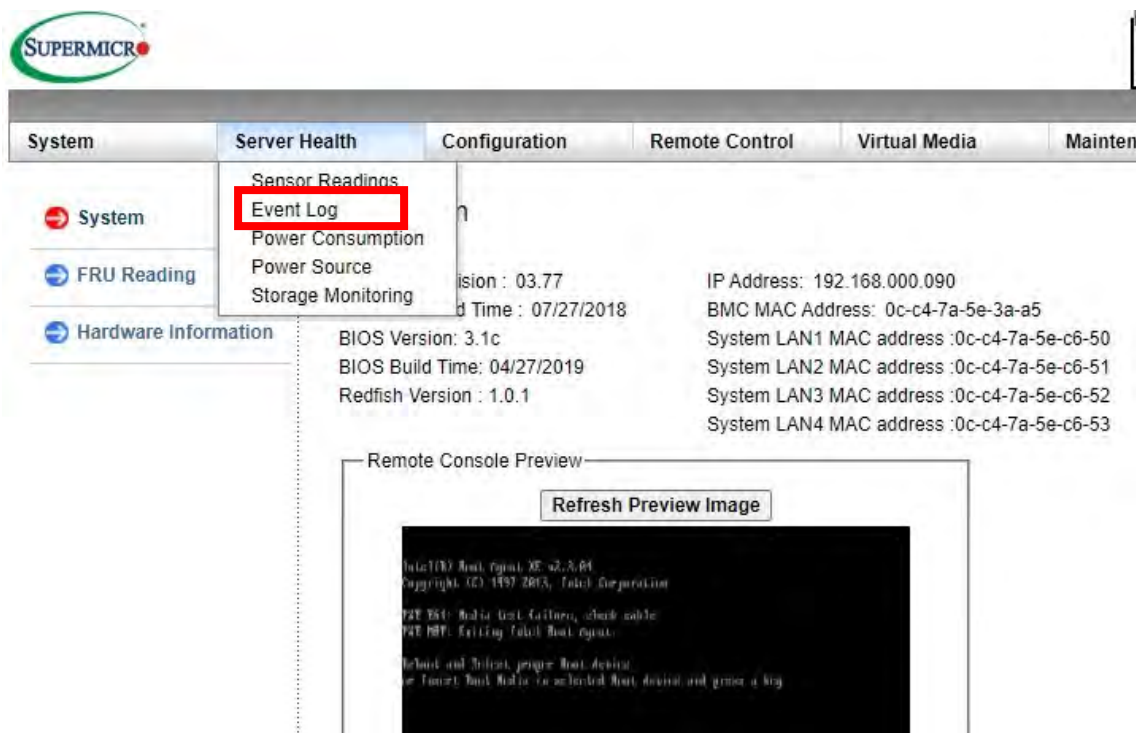
Username

Password

⑤ メニューバーの[Server Health]をクリックする



⑥ [Event Log]をクリックする



⑦ [Save]をクリックするとログはCSVファイル形式で出力されます

The screenshot shows the SUPERMICR Event Log interface. The browser address bar displays [https://192.168.0.90/cgi/url\\_redirect.cgi?url\\_name=mainmenu](https://192.168.0.90/cgi/url_redirect.cgi?url_name=mainmenu). The page header includes the SUPERMICR logo, host identification (Server: 192.168.0.90, User: ADMIN (Administrator)), and navigation links (Critical, Refresh, Logout, What's new, English). The main navigation menu includes System, Server Health, Configuration, Remote Control, Virtual Media, Maintenance, Miscellaneous, and Help. The left sidebar contains links for Server Health, Sensor Readings, Event Log, Power Consumption, Power Source, and Storage Monitoring. The Event Log section features a dropdown menu for selecting an event log category (currently set to 'All Events') and a table of events. Below the table are buttons for 'Clear Event Log' and 'Save', with the 'Save' button highlighted by a red box.

For more special event log settings, please click: [link](#)

Below is a table displaying events from the system's event log. You can choose a category from the pull-down box to filter the events and also sort them by clicking on a column header.

Event ID	Time Stamp	Sensor Name	Sensor Type	Description
1	2020/10/20 10:03:53	OEM	AC Power On	AC Power On - Assertion
2	2020/10/20 10:04:19	Chassis Intru	Physical Security (Chassis Intrusion)	General Chassis Intrusion - Assertion
3	2020/11/13 01:54:35	OEM	AC Power On	AC Power On - Assertion
4	2020/11/13 01:54:58	Chassis Intru	Physical Security (Chassis Intrusion)	General Chassis Intrusion - Assertion
5	2020/11/13 01:57:25		Session Audit	Invalid Username or Password
6	2020/11/13 01:57:25		Session Audit	Invalid Username or Password
7	2020/11/13 02:02:26		Session Audit	Invalid Username or Password
8	2020/11/13 02:02:27		Session Audit	Invalid Username or Password
9	2020/11/13 02:07:28		Session Audit	Invalid Username or Password

Event Log: Max= 512, Used= 25(event entries)

Clear Event Log Save

以上